



CALIFORNIA DEPARTMENT OF EDUCATION ADULT EDUCATION OFFICE

WIA Title II NRS Federal Table Program Facts 2005-06 ESL, ABE, and ASE (H.S. Diploma/GED) Programs

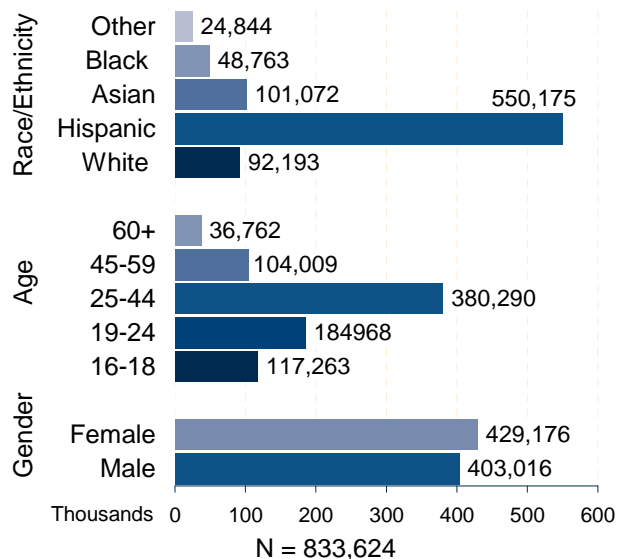
Program Enrollment PY 2005-06

Completed Entry Records	833,624
Adult Basic Education (ABE)	145,134
Adult Secondary Education (ASE)	145,675
English as a Second Language (ESL)	542,815

Federal Table Enrollment

Qualified for Federal Tables	583,088
Took pre- and post-tests	314,931 (54.0%)
Completed an instructional level	197,472 (33.9%)
Advanced more than one level	127,785 (21.9%)

Demographics



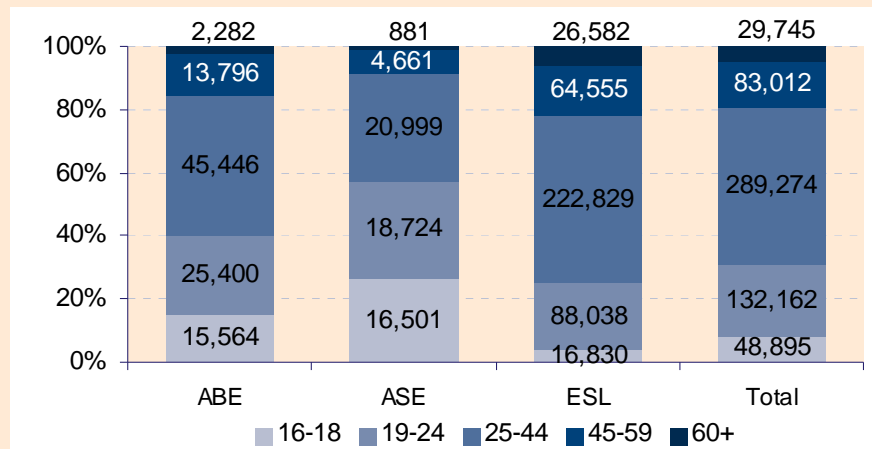
Race/Ethnicity: Other includes American Indian, Alaskan Native, Native Hawaiian, and Other Pacific Islander

NRS Federal Table Drop Reasons

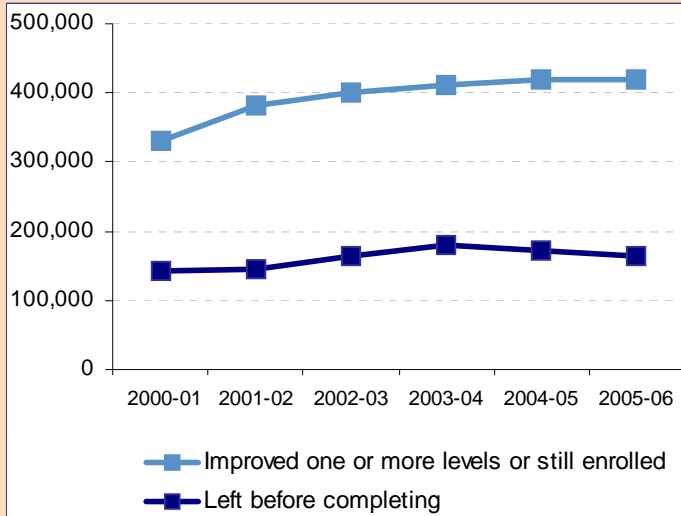
	2002-03	2003-04	2004-05	2005-06
Learners with Entry Records	815,310	842,464	848,220	833,624
Learners with less than 12 hours of instruction	191,349	189,171	194,674	187,513
Learners younger than 16 years	16,189	11,792	10,675	10,333
Learners concurrently enrolled in HS/K-12	43,616	53,934	57,171	60,046
Learners without a valid instructional level	42,884	31,004	26,769	21,688
Total number of learners Included in Federal Tables	565,311	591,574	591,893	583,088

Enrollment Status						
	2000-01	2001-02	2002-03	2003-04	2004-05	2005-06
Employed	154,194	188,800	201,760	214,278	216,334	219,418
Unemployed	95,022	145,178	157,109	177,964	182,638	195,052
Retired	15,340	16,379	16,136	16,955	17,085	17,042
Not Seeking Work	71,358	86,173	89,733	93,564	102,222	97,831
Correctional Setting	22,076	32,087	34,345	40,902	47,622	56,296
On Public Assistance	23,989	33,851	28,548	28,543	28,114	25,330

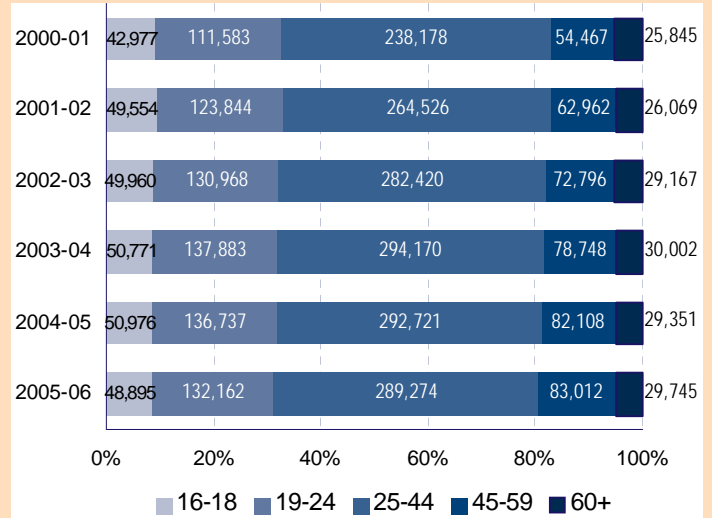
	Total				
	Number	Percent	ABE	ASE	ESL
16-18	48,895	8.4	15,564	16,501	16,830
19-24	132,162	22.7	25,400	18,724	88,038
25-44	289,274	49.6	45,446	20,999	222,829
45-59	83,012	14.2	13,796	4,661	64,555
60 and Older	29,745	5.1	2,282	881	26,582
Total	583,088		102,488	61,766	418,834



Retention and Completion



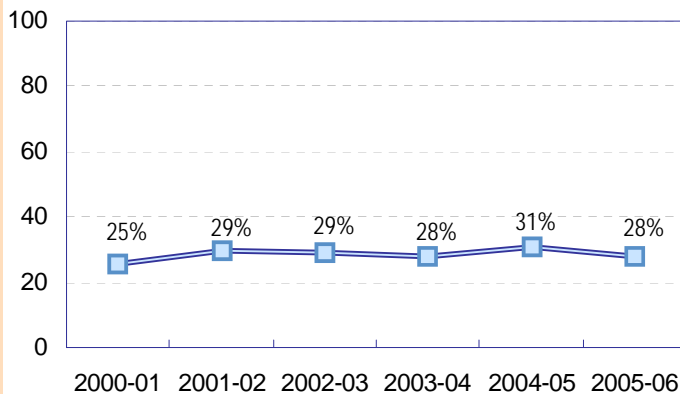
Enrollment by Age Group



Performance Measure I: Demonstrated Improvement in Literacy Skills

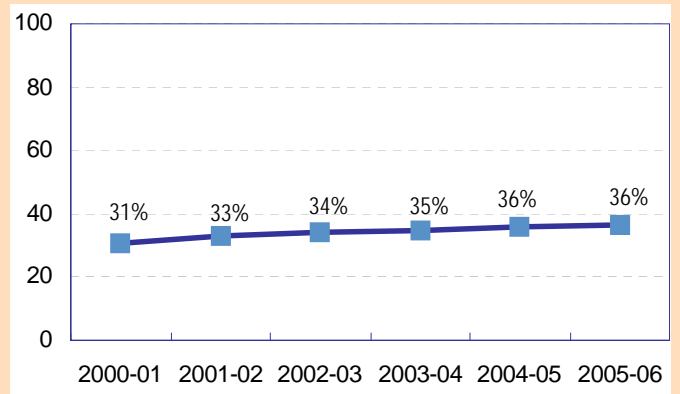
Sub Measure 1: Adult Basic and Secondary Education¹

The percentage of adults enrolled in basic literacy programs who acquired the basic skills needed to complete one or more levels of the instruction in which they were initially enrolled.



Sub Measure 2: English Literacy²

The percentage of adults enrolled in English literacy programs who acquired the level of English language skills needed to complete one or more levels of the instruction in which they were initially enrolled.

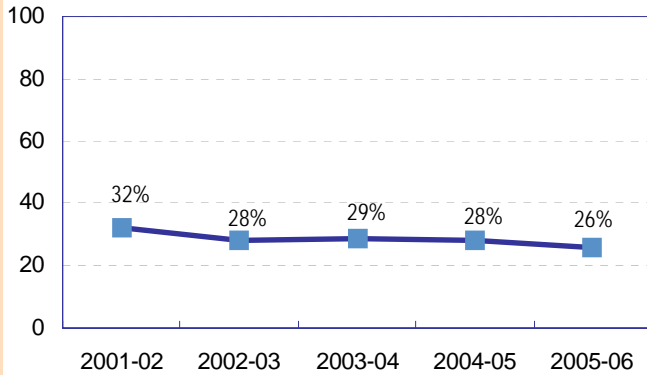


Note: ¹Adult Basic and Secondary Education programs consist of five instructional levels representing a hierarchy of basic skills ranging from beginning literacy to high school completion.

²English Literacy education programs consist of six instructional levels representing a hierarchy of English language skills ranging from beginning English and literacy to advanced language proficiency.

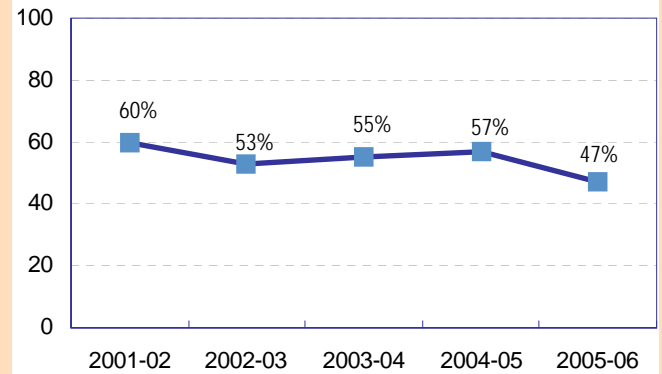
**Performance Measure II:
High School Completion**

The percentage of adult learners with a high school completion goal who earned a high school diploma or GED



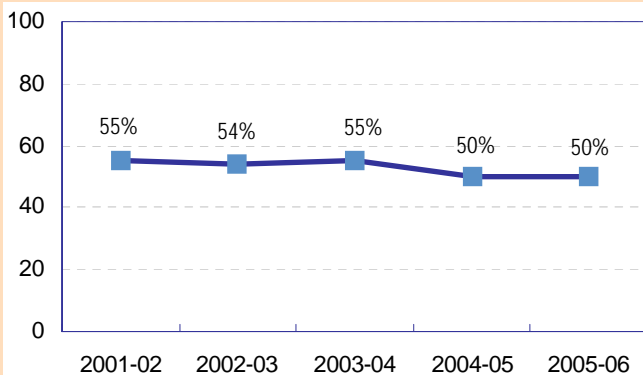
**Performance Measure III:
Enter Postsecondary Education or Training**

The percentage of adult learners with a goal to continue their education or training after exiting the program



**Performance Measure IV:
Entered Employment**

The percentage of unemployed adult learners with an employment goal who were employed after exiting the program



**Performance Measure V:
Retained Employment**

The percentage of adult learners with a job retention goal at the time of enrollment who were employed after exiting the program

