

## Technology Integration: NEDP Incorporates 21<sup>st</sup> Century Skills

---

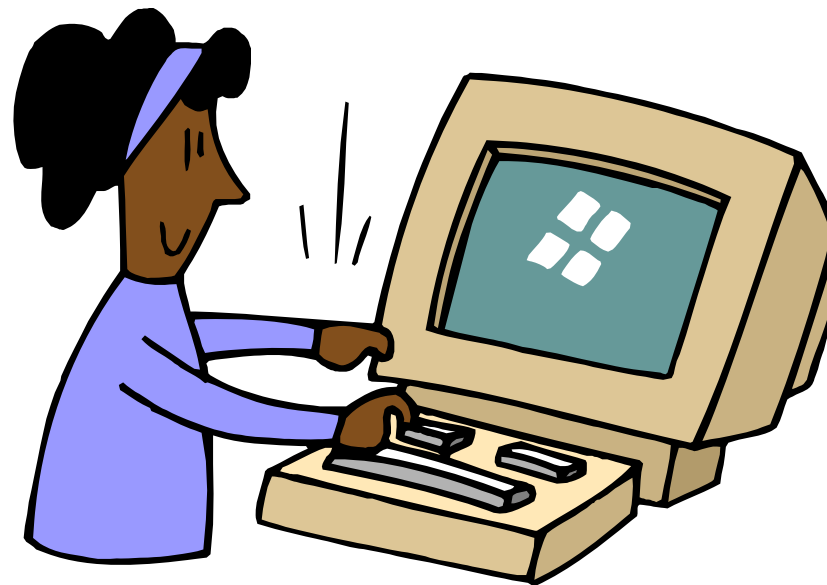
Andrew Evans

CASAS

[aevans@casas.org](mailto:aevans@casas.org), (858) 292-2900 x 184

---

- The changing technology landscape
- Technology infusion into the NEDP
- Implications
- Next steps



- What does “technology infusion” mean?
  - The NEDP is introducing information and computer technology (ICT) in the form of:
    1. Tools and resources, e.g. computer-delivered testing, Web resources
    2. Foundation competencies in client assessment

- Why is the NEDP pursuing this path?
  - Computer-based tools and resources can introduce efficiency and cost reduction:
    - Elimination of costs associated with print materials
    - Faster scoring and information dissemination
    - Faster response time for improvements and modifications to system components, e.g. task design or resource (references)

- Why is the NEDP pursuing this path?
  - High school standards now require competency in ICT
    - Competency in computer and software application use as part of activities
      - Word processing, spreadsheets, presentations, Internet

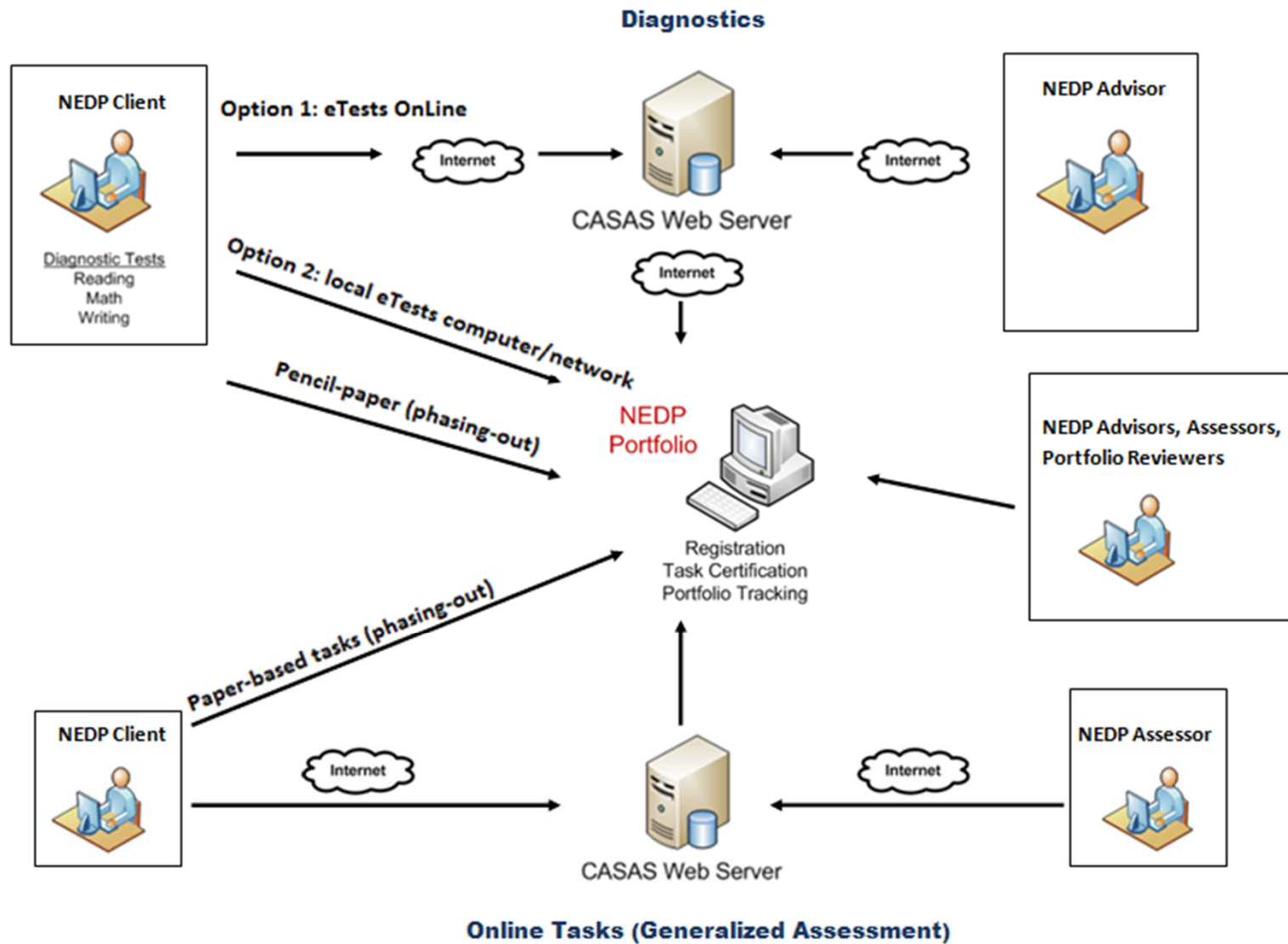
- Computer technology infusion into the NEDP
  - Basic skills verification (Diagnostic Phase)
  - Specialized skills assessment (Diagnostics and Generalized Assessment)
  - Open diagnostics (Career Exploration component)
  - Generalized Assessment (Task completion)

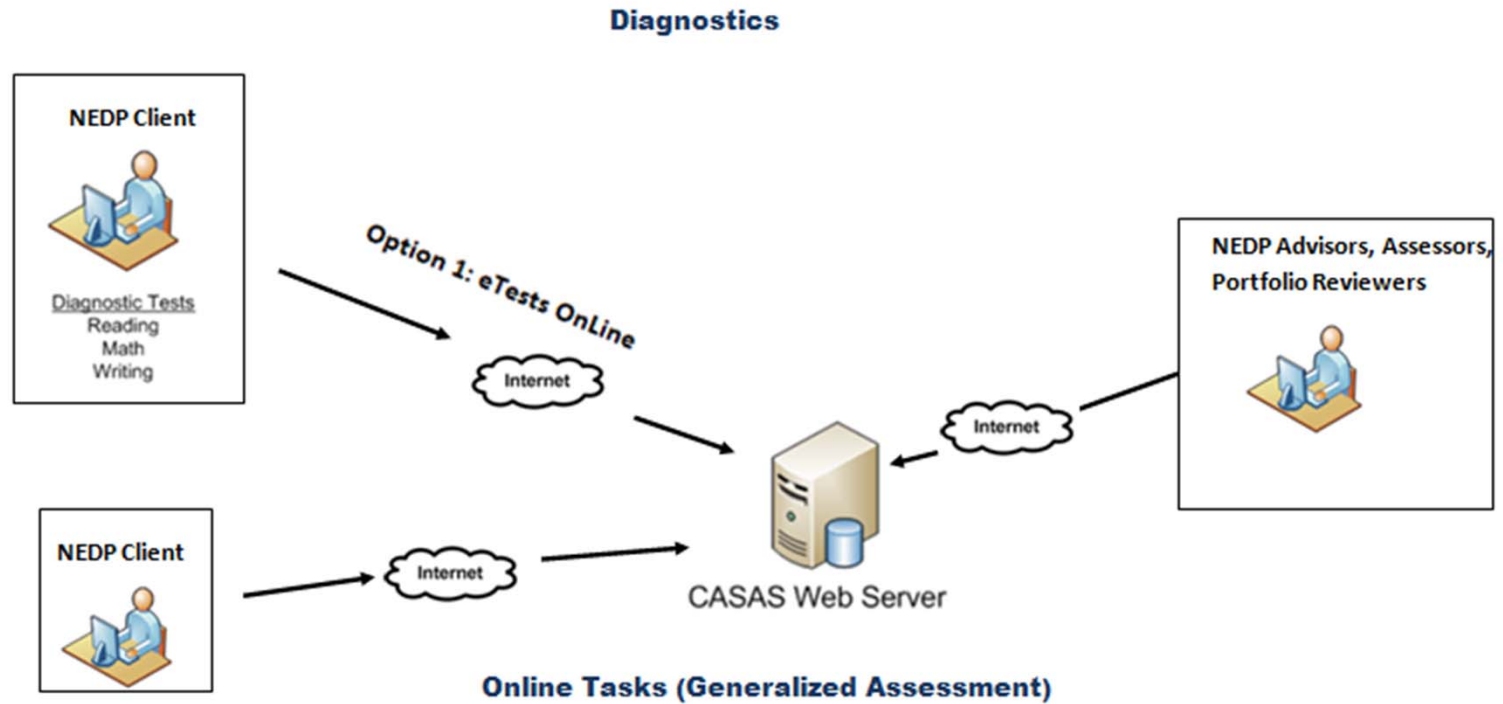
- Technology infusion into the NEDP: hardware, software applications, and the Internet
  - Local and online computer software solutions
    - CASAS eTests
      - Diagnostics, including reading, math, and writing
      - WSCS
    - O\*NET Interest Profiler and O\*NET OnLine
    - Online assessment of NEDP Tasks
    - NEDP electronic portfolio
    - Graduate follow-up survey and online reporting

## Diagnostics

- Current Tools:
  - Pencil-paper tests
  - CASAS eTests
    - Stand-alone or network version
    - Online (Internet)
      - Skill areas
        - Reading
        - Math
        - Writing (end of summer 2011 for Online)

- Generalized Assessment
  - Generalized Assessment Tasks
    - Current Tools:
      - Pencil-paper tests
      - NEDP Online





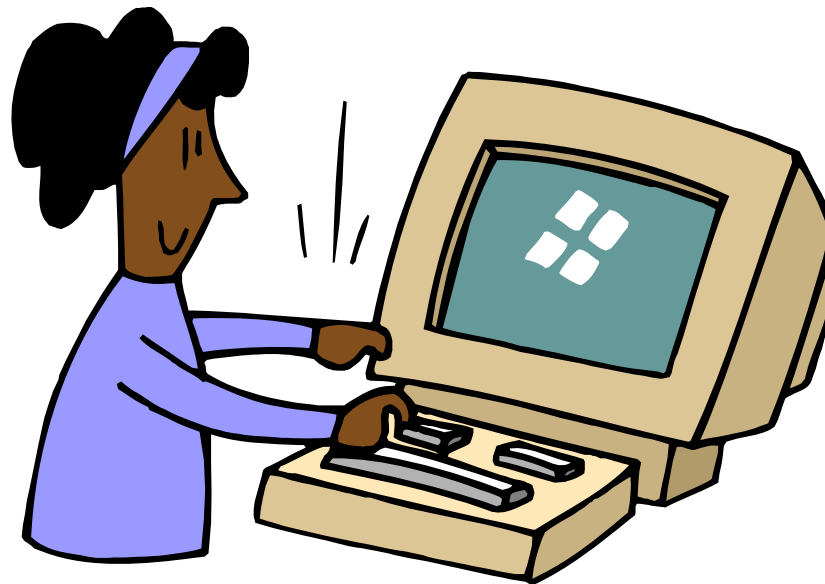
- Computer technology infusion into the NEDP
  - Basic skills verification
    - Technology requirements:
      - CASAS eTests
        - Stand-alone: single computer
        - Network: multiple computers connected via local network, sharing a common database
      - CASAS eTests Online: Internet connectivity, and Microsoft Internet Explorer

- Computer technology infusion into the NEDP
  - Generalized Assessment tech requirements (present):
    - NEDP Online
      - Microsoft Internet Explorer
    - NEDP Portfolio
      - Standalone or network installation
      - Internet connection

- Logistics, resources, “IT Department issues”
- How ICT (information and communications technology) skills will be assessed
- Changes to advisors and assessor roles
- ICT Performance Indicators

- Logistics, resources, “IT Department issues”
  - Discussion:
    - What barriers have you experienced when pursuing computer technology installation/deployment?
    - What barriers do you anticipate?
    - Who can you go to for assistance?
    - What is the realistic timeline?
    - What do you need from CASAS?

- Foundation competencies



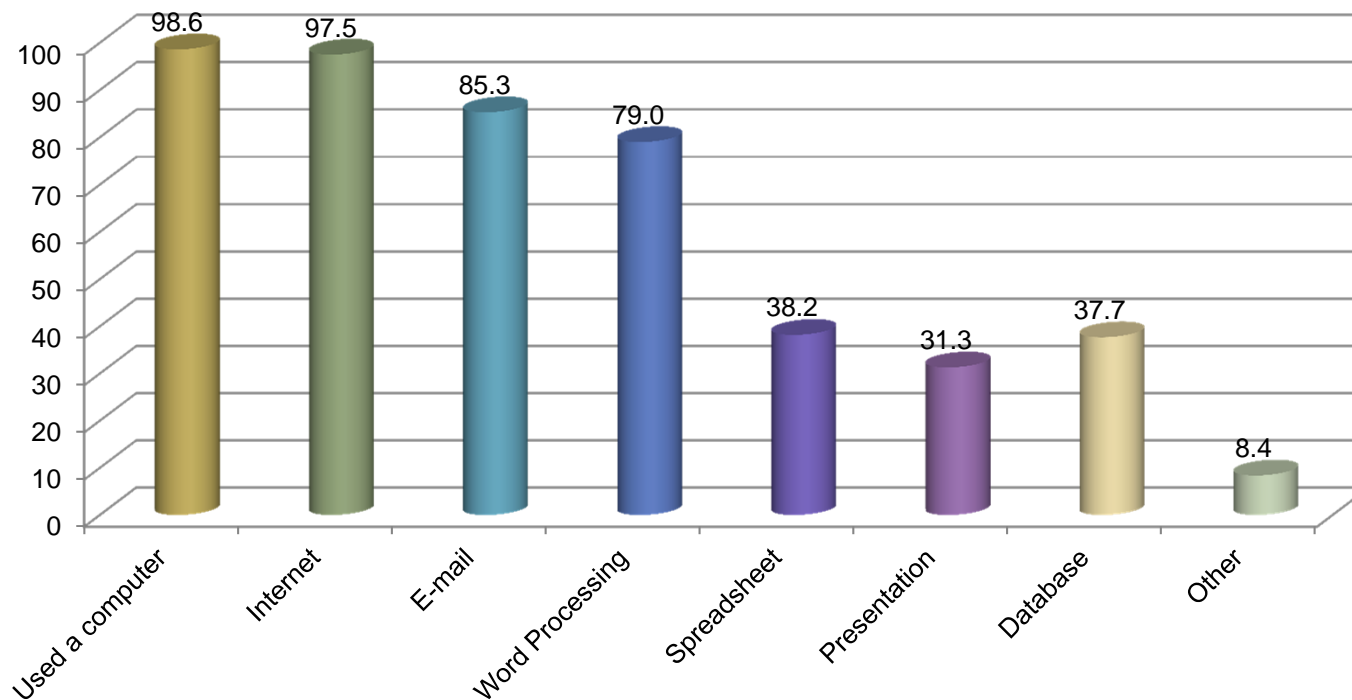
## ICT Foundation Competencies will be assessed in Generalized Assessment

- Competency 26: Demonstrate computer skills including keyboarding, software applications, and email
- Competency 27: Demonstrate the use of technology to conduct research, communicate information, create original work, organize data, and solve problems
- Competency 28: Identify and practice responsible and informed use of ICT

- Implications for clients, advisors, and assessors
  - Discussion:
    - How will client skills be verified before going to Generalized Assessment?
    - How will NEDP professionals verify their skills?
    - How significant is the challenge?

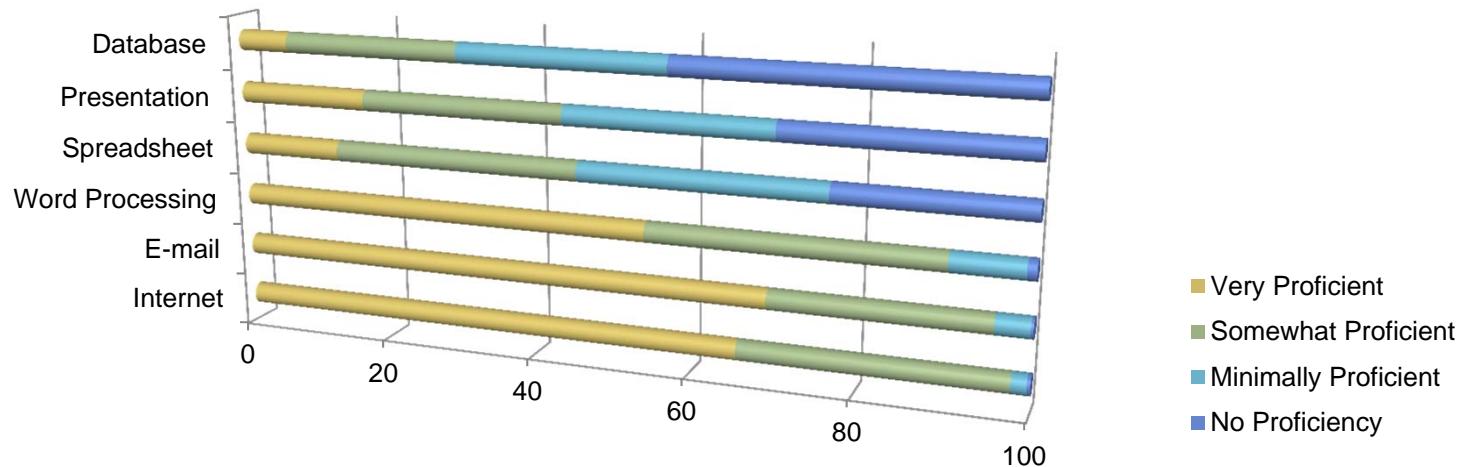
- State of affairs

**Percent of surveyed clients who have used computers and software (n=716)**



Are advisors and assessors ready to evaluate those skills?

## Staff self-assessment of computer proficiency



	Internet	E-mail	Word Processing	Spreadsheet	Presentation	Database
Very Proficient	65.8	69.4	54.3	13.3	17.3	6.8
Somewhat Proficient	32	26.3	36	32.4	26.6	23.4
Minimally Proficient	1.8	4	8.6	30.9	26.3	27
No Proficiency	0.4	0.4	1.1	23.4	29.9	42.8

- We value your feedback!
  - Please fill out the evaluation form.
  - Return the evaluation to your presenter.
  
- Visit the Resource & Technology Exhibits
  - Golden Foyer
    - Tuesday & Wednesday, 8:00 am-5:00 pm
  
- Attend the Poster Session
  - Golden Ballroom
    - Thursday, 8:00-9:15 am